

9kHz-70GHz DC Block

Super Low End Frequency



Product Overview

AT-DCLF-18M18F is a broadband DC Block from 9kHz to 70GHz. The insertion loss is -1.2 dB with -10dB return loss performance

The RF1 and RF2 are 1.85mm Female and Male respectively, other connector is available according to request. Input and Output port can be changed according to test need.

More information, please visit www.atmicrowave.com

Advantages

- ✓ Frequency: 9kHz-70GHz
- ✓ Insertion Loss: -1.5dB
- ✓ Max Voltage: 10V
- ✓ Power Handling: +27dBm

Application

- ✓ 5G Communication
- ✓ Test Equipment
- ✓ ROF (RF Over Fiber)
- ✓ Radar System
- ✓ Optical Application

Key Features

Parameter	Min	Typical	Max
Frequency(note)	4kHz	9kHz-70GHz	
Insertion Loss		-1.5dB	-3dB
Return Loss		-12dB	
Capacitance Value		1uF	
Group Delay		100ps	
Max Voltage			+10V
Power Handling			+27dBm

Note: Only test from 9kHz due to the test limitation at present.





AT-DCLF-18M18F

9kHz-70GHz DC Block

Ordering

Part Number	Description
AT-DCLF-18M18F (Default)	RF1 1.85mm Female, RF2 1.85mm Male
AT-DCLF-18F18F	RF1 1.85mm Female, RF2 1.85mm Female
AT-DCLF-18M18M	RF1 1.85mm Male, RF2 1.85mm Male

Mechanical Information

Item	Description
RF1 Port	1.85mm Female
RF2 Port	1.85mm Male
Case Material	Copper
Finish	Gold Plated
Weight (Without Heatsink)	20g
Size:	29x14x5 mm

Absolute Maximum Ratings Table

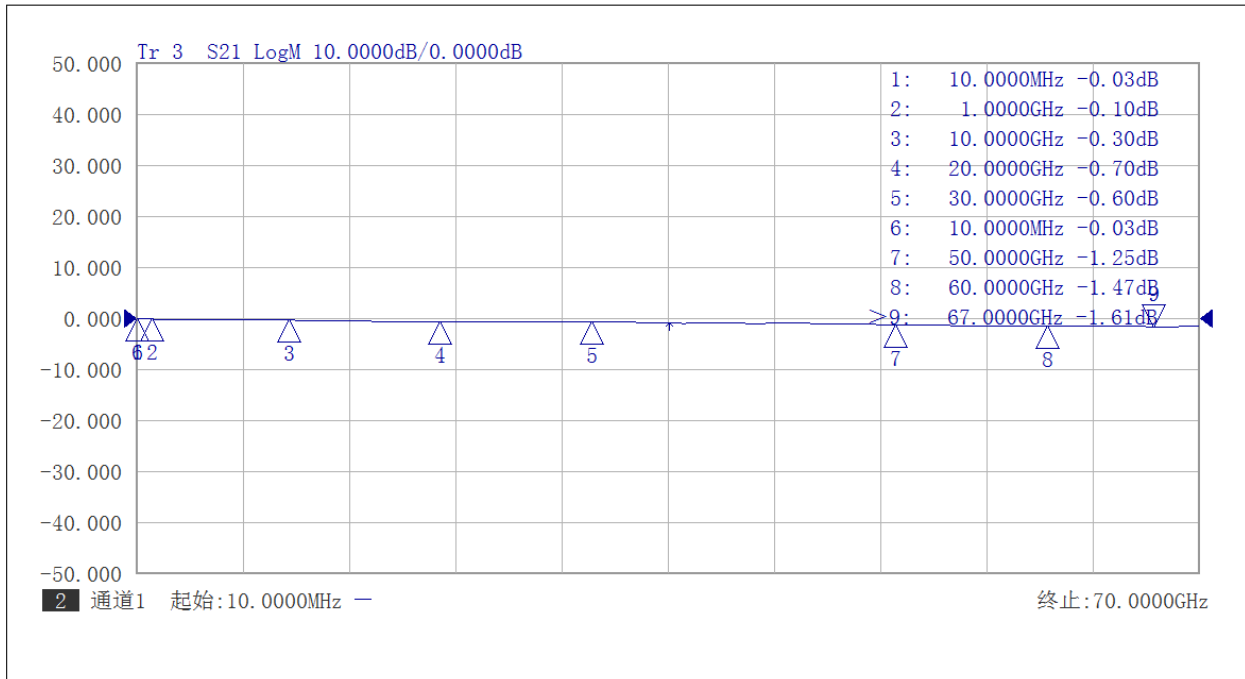
Parameter	Value
Voltage	+10V
RF RF1 Power	+27 dBm
Operating Temperature	-40 to +70C
Storage Temperature	-65 to +150C

Notes:

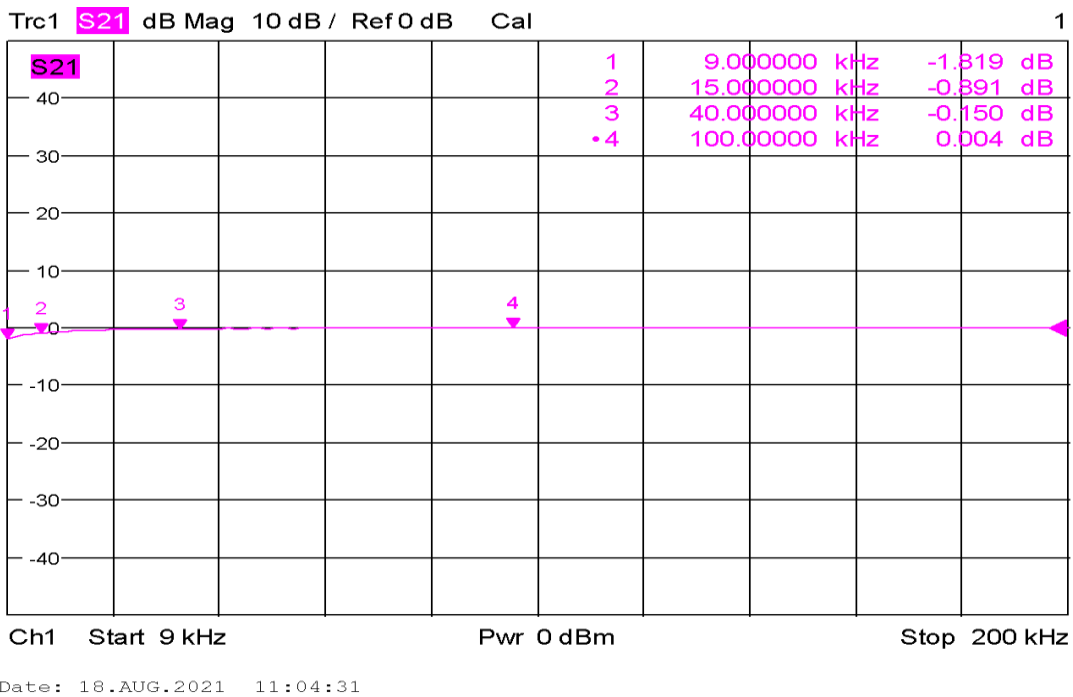
1. Datasheet may be changed according to update of MMIC, Raw materials , process, and so on.
2. This data is only for reference, not for guaranteed specifications.
3. Please contact AT Microwave team to make sure you have the most current data.



Test Data:

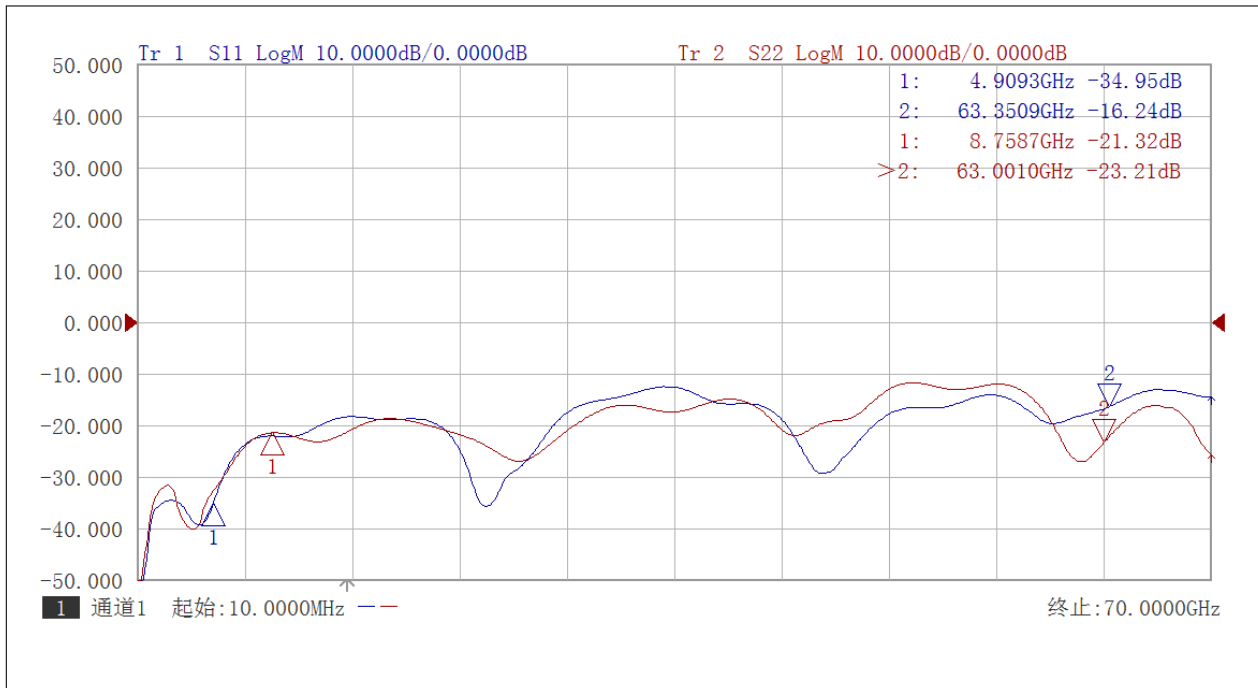


Insertion loss vs Frequency 10MHz-70GHz

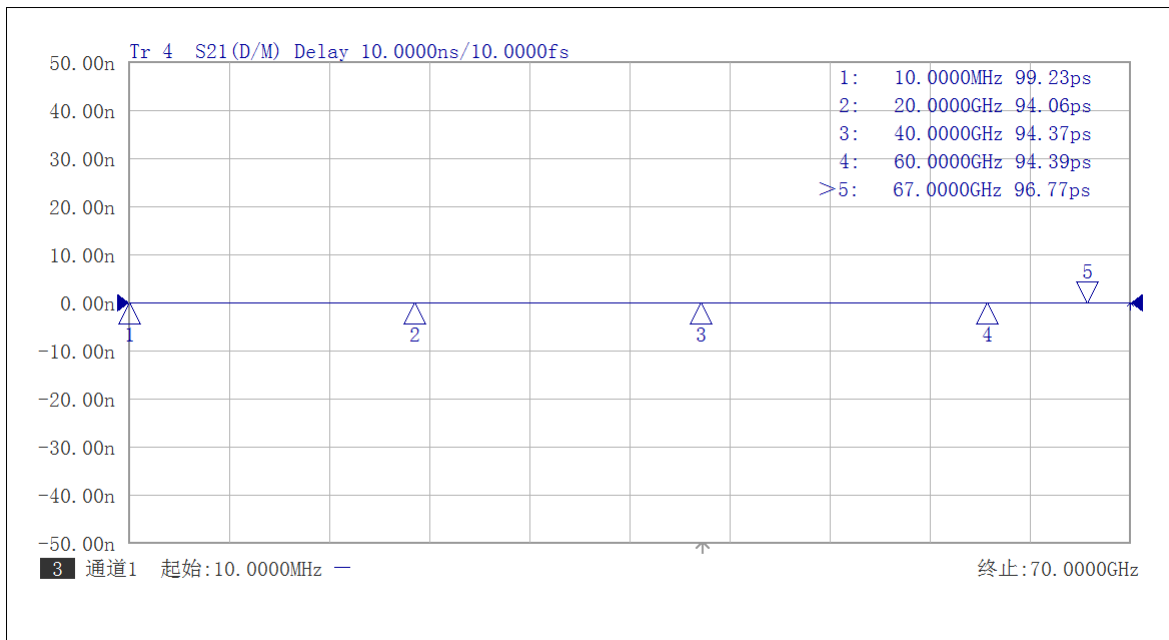


Low Frequency Insertion Loss





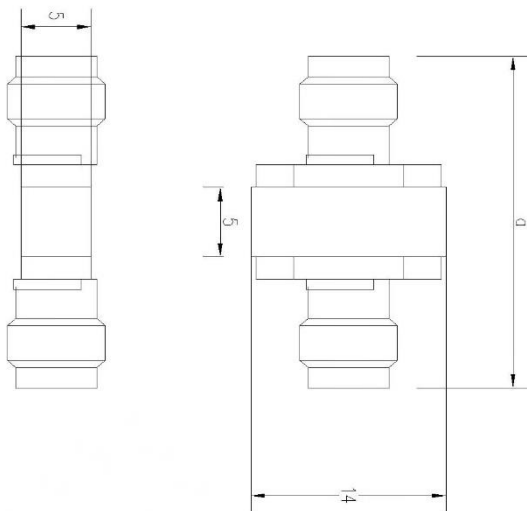
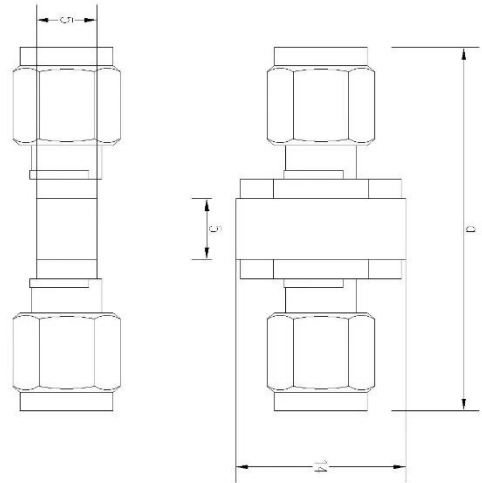
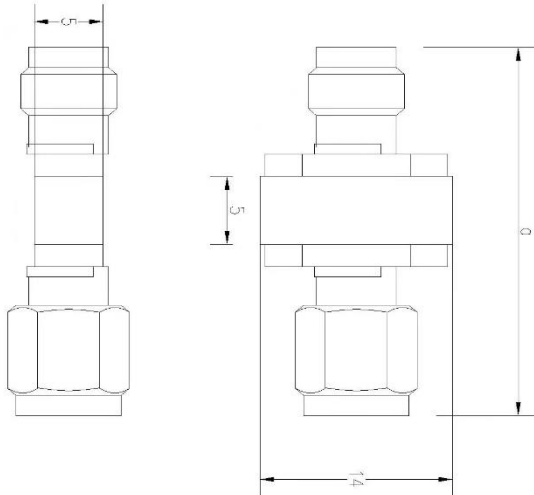
Input and Output Return Loss vs Frequency 10MHz-70GHz



Group Delay vs Frequency



Dimension (mm)



◆ A=29mm, AT-DCLF-18M18F

◆ A=30.4mm, AT-DCLF-18M18M

◆ A=27.6mm, AT-DCLF-18F18F

